

The Shandon Cytospin uses carefully controlled centrifugation to separate and deposit a thin layer of cells on slides while maintaining cellular integrity. It produces greater cell capture and better representation of all cell types present in homogeneous liquid samples than other methods.

### Product Features

- Redesigned lid-release mechanism allows for one-handed opening and closing of the outer lid
- Will not operate unless lid is in locked position
- Lid remains locked at all times during rotation
- Polycarbonate window allows the operator to see the spinning head/rotor during cytocentrifugation
- Designed to prevent accidental fluid spillage
- Pull out program card allows for up to 9 programs to be logged for fast and convenient retrieval
- Erasable ink pen included
- IVDD compliant



#### Program Key Pad

"Easy-touch" design allows for easier keystrokes and more intuitive programming.

#### Speed

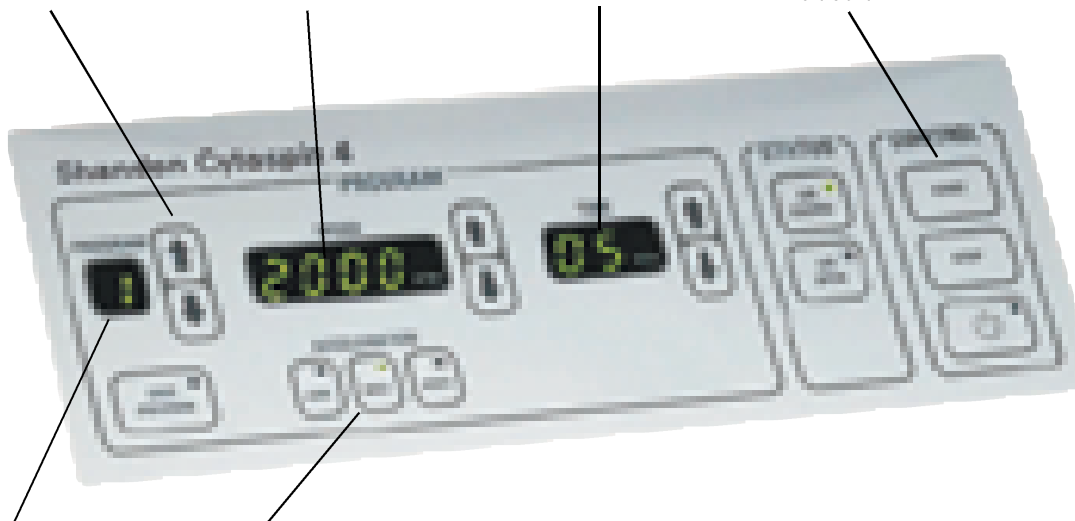
The Speed window displays the programmed spinning speeds from 200-2000 rpm

#### Time

The TIME window displays the programmed and remaining run time from 1 to 99 minutes

#### Control

The Standby Mode is a power saving mode. Also used to turn the displays OFF and ON from the front of the unit



#### Protected Program Memory

Up to 23 routines can now be stored for instant recall, and protected from power loss.

#### Acceleration Control

The 3 ACCELERATION buttons allow the operator excellent flexibility and exceptional protection for fragile samples.

#### Safety Alarms

An audible alarm signals the operator if the Shandon Cytospin is out of balance, outside the speed tolerance, or if the lid is not properly locked. As an extra measure of safety for the user, the unit will not spin if the lid is not locked.

Also, a Specimen Safety Alarm feature reminds users at one-minute intervals to remove specimens from the Shandon Cytospin so as to protect specimens from "air-drying" and to ensure consistent results.



# Anatomical Pathology

## Shandon Cytospin<sup>®</sup> Cytocentrifuge



### Specifications

#### Model

Dimensions H x W x D

Lid Closed

Lid Open

Power Requirements

Weight kg (lbs)

#### Shandon Cytospin 4

240 x 620 x 405 mm

625 x 620 x 405 mm

100-240V AC, 50/60 Hz, 150VA Max

12 (26.5)

### Ordering Information

#### Cat No.

A78300002U

#### Description

Shandon Cytospin 4

### Accessories

#### Cat No.

Included with system

59910018

59910052

A78310250

A78330031

#### Description

Cytospin sealed head

Cytoclip slide clips

Handbook

Marking Pen

#### Qty

Each

6 / pk

1

1

### Optional Accessories

5991056

5991051

5991059

5991055

5991054

5991057

B5991050

59910018

Cytoslide, single circle, coated circle on back

Cytoslide, single circle, non-coated circle on back

Cytoslide, single circle, non-coated circle on front

Cytoslide, double circle, coated

Cytoslide, double circle, non-coated

Cytoslide, single circle, black mask

Cytoslide, double circle, blue mask

Cytospin sealed head

100 / box

100 / box

100 / box

100 / box

100 / box

100 / box

100 / box

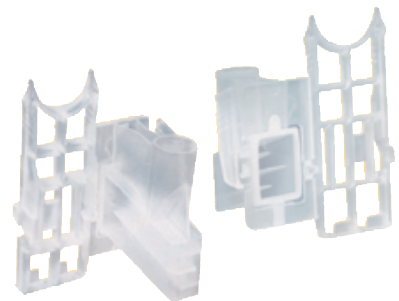
Each

## Shandon EZ Cytofunnel Sample Chambers

### Product Features

- Intended for single use with all Shandon Cytospin cytocentrifuge applications
- Simple and easy to use operation illustrations are included in the package
- Safe - reduces the risk of exposure to pathogenic samples

- Disposable - eliminates time-consuming decontamination and cleaning
- Eliminates the need for metal Shandon Cytoclips<sup>®</sup>



### Ordering Information

#### Cat No.

A78710001

A78710003

A78710004

A78710005

#### Description

Shandon EZ Megafunnel with caps and slides

Shandon EZ Single Cytofunnel with white filter cards and caps

Shandon EZ Single Cytofunnel with brown filter cards and caps

Shandon EZ Double Cytofunnel with white filter cards and caps

#### Qty

25 / Box

50 / Box

50 / Box

50 / Box