

Baths

Cooling Immersion Unit for Digit-Cool

Adjustable temperature from -10°C to 100°C
 Stability, 100°C, +/-0.05°C, 0°C, +/-0.05°C, -10°C, +/-0.1°C, Resolution, 0.1°C
 Conforms to DIN 12879, Class 2 Safety Standard

Digit-Cool

Maximum volume to achieve the working temperature limit: 26 litres.
 Minimum tank depth: 16 cm.
 Hermetically sealed CFC free compressor with built in control valve, condenser and evaporator.
 RS-232 output for computer control or printer.
 Control and stirring built into a portable unit with lifting handle.



Part No.	Temp. Range °C	H x W x D (cms) (external dims)	Pump Pressure / Flow Rate H ₂ O	Power W	Compressor HP	Weight Kgs
C/IT/010011	0 to +100°C	45 x 21 x 51	150 mbar / 12 l/min	1460	3/8	22

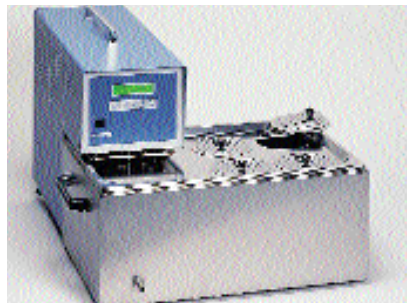
Accessories

Stainless steel baths. Double skinned with an AISI 304 stainless steel exterior with a bath of AISI 310 stainless steel, providing thermal insulation by injecting foam insulation that prevents condensation or excessive external temperatures. Comes with a drain tap.

Part No.	Capacity Litres	H x W X D(cms) (internal dims.)	H x W X D(cms) (external dims.)	Weight Kgs
C/B/010244	20	15 x 48 x 30	24 x 61 x 41	9
C/B/010245	27	20 x 48 x 30	29 x 61 x 41	11



C/B/010246A - 4 place ring set lid: 105, 80, 60 and 37 mm diameter reduction rings and a thermometer location hole in the lid.



1. - C/B010242 - Gable lid
2. - C/B010243 - Tube rack support, capacity for 3 racks
3. - Tube Racks

Part No.	Tubes Ømm	No. of Tubes	H x W X D (cms) (internal dims)
C/B/010226	13	36	8 x 8.2 x 23.6
C/B/010227	16	24	8 x 8.2 x 23.6
C/B/010228	20	24	8 x 8.2 x 23.6

