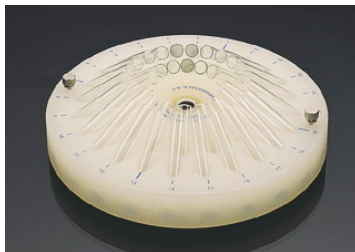


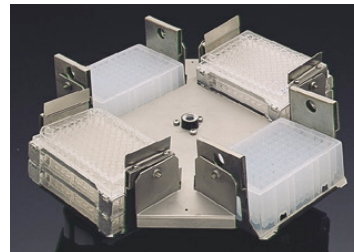
Savant SpeedVac rotors are available in a wide variety of styles and sizes to accommodate all your sample requirements. They are designed to efficiently handle and accommodate microtubes, bottles, glass and plastic tubes, flasks and even microplates. Individual tube volumes range from 0.4 up to 500 ml. The polypropylene rotors are fully autoclavable.



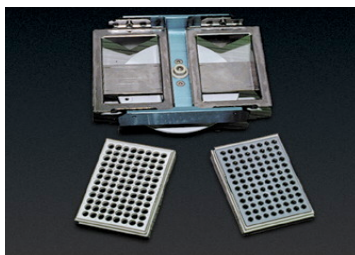
RH40-12: 40-place 12 x 75 mm rotor



RH40-11: 40 x 1.5 ml rotor



MPTR8-210: rotor for 96 well plates



RD2MP: Rotor for microplates for use with DNA SpeedVacs



RH8-200: 8 x 250 ml rotor



RH20-12: 20 place 12 x 75 mm rotor with block anodised metal tube holders

## Upper Magnetic Assemblies

### Upper Magnetic Assemblies - Magnetic Drive for Savant SpeedVac Concentrators

Cat No.	Description	Concentrator Model	Applications
UMA100	Upper Magnetic Assembly	SPD1010, SC110, SC110A	Aqueous, Organics
UMA200	Upper Magnetic Assembly	SPD2010	Aqueous, Organics
SUMAX300	Stainless Steel Upper Magnetic Assembly	SC210A	Combi Chemistry Aggressive Organics Acids (>1.0N)
SUMAX400	Heavy Duty Magnetic Assembly	SPD2010	Combi Chemistry Aggressive Organics Acids (>1.0N)
SUMAXSPD	Stainless Steel Upper Magnetic Assembly with Teflon Ceramic Bearings	SPD131DDA	Combi Chemistry Aggressive Organics Acids (>1.0N)
UMASPD	Upper Magnetic Assembly	SPD111V, SPD121P	Aqueous, Organics