

For the determination of the necessary agents required for sedimentation.

Applications

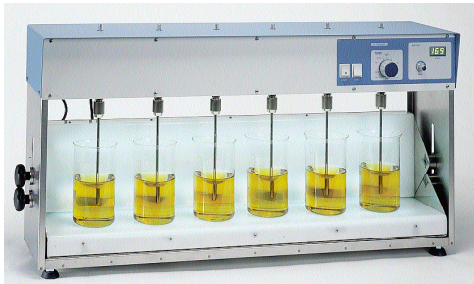
Optimisation of coagulant additives and poly-electrolytes for surface and residual water treatment. Evaluation of the efficiency of an absorbent on toxic agents.

Control Panel

Mains ON/OFF switch with "ON" indicator lamp.

Light switch with "ON" indicator lamp.

Timer /disconnection switch from 0 to 60 minutes or continuous operation. Electronic speed selector with digital display.



Flocculator with simultaneous horizontal and vertical illumination (6 places).



Flocculator with vertical illumination (4 places).

The main case of the unit is made of epoxy coated steel, with AISI 304 stainless steel supports with anti slip rubber feet.

Features

Stirring equipment for 4 or 6 places that accommodates beakers up to 1000 ml tall form and 2000 ml squat form.

Stirring speed from 15 to 200 rpm.

Silent running.

Easily changed, adjustable height, over head stir bars made of AISI 304 stainless steel are easily fixed in position.

Two vertical and horizontal adjustable illumination units can be placed in the unit. This adjustable accessory allows the light angle to be varied according to the samples being run.

Part No.	No. of places	Speed rpm.	H w W x D (ext. dims) cm	Illumination Power W	Power W	Weight Kg
C/W/020001	4	15 - 200	52 x 70 x 23	40	160	24
C/W/020003	6	15 - 200	52 x 99 x 23	50	170	36

Accessories

Illumination units

Simultaneous lighting horizontal and vertical

Part No.	Model Part No.
C/W/020002	C/W/020001 4 places.
C/W/020004	C/W/020003 6 places.



Portable Flocculator Jartest

Four position with illumination.

Features

Mains voltage or portable connection to a cigarette lighter within a car (12 V DC) for achieving on site chemical dose measurements for waste water treatment plant samples.

Variable height over head stirrers made of AISI 304 stainless steel.

Suitable for vessels up to 1 litre capacity.

Control Panel

Power switch indicator lamp when the illumination element is on.

Speed selector of: 20, 40, 50, 100 and 200 rpm or continuous use.

Timer from de 0 to 30 minutes.



Part No.	H x W x D (external) cm	Power W	Weight Kg
C/W/020005	32 x 25 x 25	20	4.8

Accessory: C/W/020006 - Carrying case